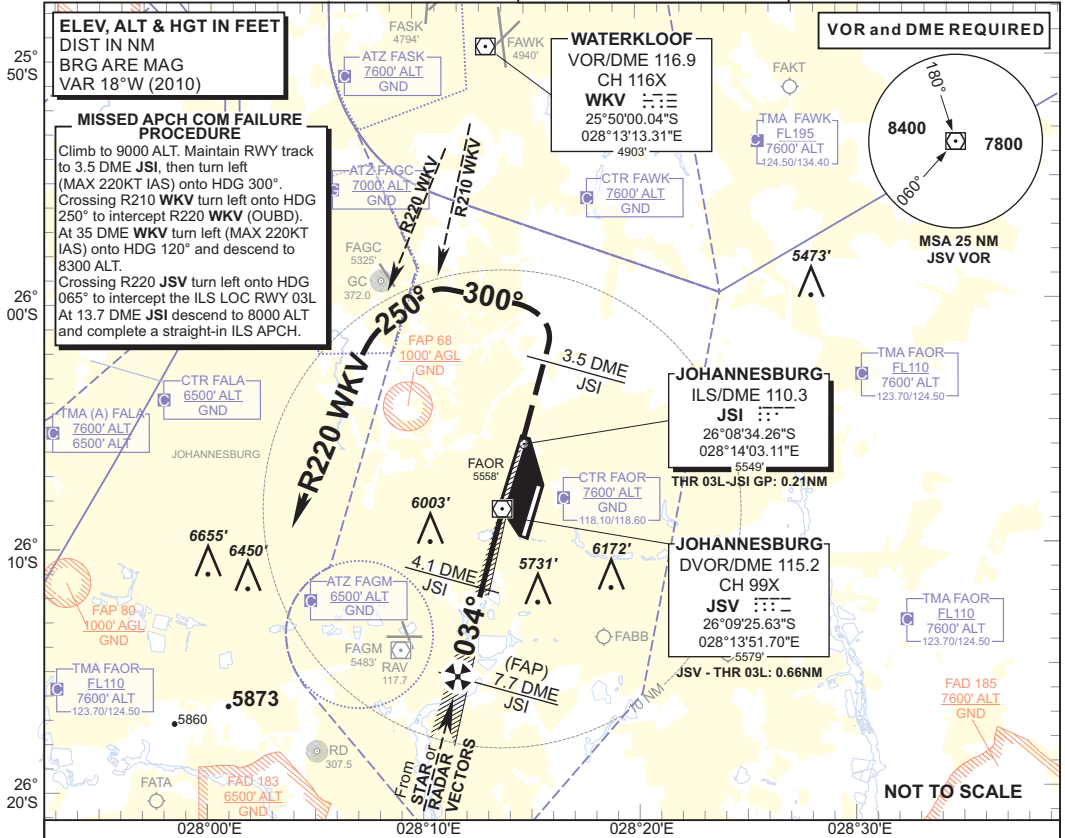


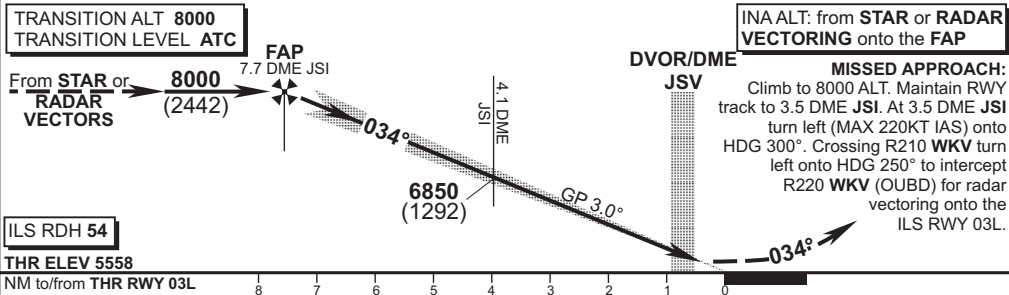
INSTRUMENT AERODROME ELEV 5558'
APPROACH CHART
 HEIGHTS RELATED TO
THR RWY 03L - ELEV 5558'

RADAR APP S 124.50 ATIS 126.20
 E 124.50 115.20
 W 123.70
 TWR E 118.80 SMC 121.90
 W 118.10

JOHANNESBURG
 (O.R. TAMBO INTERNATIONAL)
ILS Y RWY 03L
 CAT A - D



JSI DME	3	2	1			
ADVISORY ALT (HGT)	6500 (942)	6190 (632)	5870 (312)			



ILS RDH 54		THR ELEV 5558					INA ALT: from STAR or RADAR VECTORING onto the FAP									
NM to/from THR RWY 03L		8	7	6	5	4	3	2	1	0						
Straight-in Approach	OCA (H)	A	B	C	D/DL	GS	KT	80	100	120	140	160				
	With 3.5% Missed APCH Gradient	CAT I	5758 (200)	5758 (200)	5758 (200)	5759 (201)	FAP to THR	M:S	5:37	4:30	3:45	3:13	2:48			
	With 2.5% Missed APCH Gradient	CAT II	5658 (100)	5658 (100)	5658 (100)	5662 (104)	Rate of descent	FPM	425	531	637	743	849			
	With 2.5% Missed APCH Gradient	CAT I	6273 (715)	6284 (726)	6296 (738)	6317 (759)	GS	KT	120	140	160	180	200			
Circling	WEST OF RWY 03/21	CAT II	6176 (618)	6192 (634)	6206 (648)	6220 (662)	MAPT ROC (3.5%)	FPM	425	496	567	638	709			
	EAST OF RWY 03/21	CAT I	6070 (512)		6410 (852)		NOTE: 1. 3.5% Missed APCH climb gradient required to cross CTR BDRY 7600 ALT or above. 2. DME JSI (110.3 MHz) co-located with Glide Path transmitter. 3. Parallel approach authorised with RWY 03R.									
			6050 (492)		6250 (692)											

CHANGE: LANSERIA CTR & TMA and NOTE

EFF: 18 AUG 16